

THIS INSTRUMENT PREPARED BY  
 RONNIE L. FURNISS  
 OF  
**CAULFIELD and WHEELER, INC.**  
 SURVEYORS - ENGINEERS - PLANNERS  
 7900 GLADES ROAD, SUITE 100  
 BOCA RATON, FLORIDA 33434 - (561)392-1991  
 CERTIFICATE OF AUTHORIZATION NO. LB3591  
 OCTOBER 2022

# AVENIR - POD 15

BEING A REPLAT OF A PORTION OF PARCEL A-1, AVENIR, AS RECORDED IN  
 PLAT BOOK 127 PAGE 85, OF THE PUBLIC RECORDS OF PALM BEACH COUNTY,  
 FLORIDA LYING IN SECTIONS 9, 10, 15 AND 16, TOWNSHIP 42 SOUTH, RANGE 41  
 EAST, CITY OF PALM BEACH GARDENS, PALM BEACH COUNTY, FLORIDA.

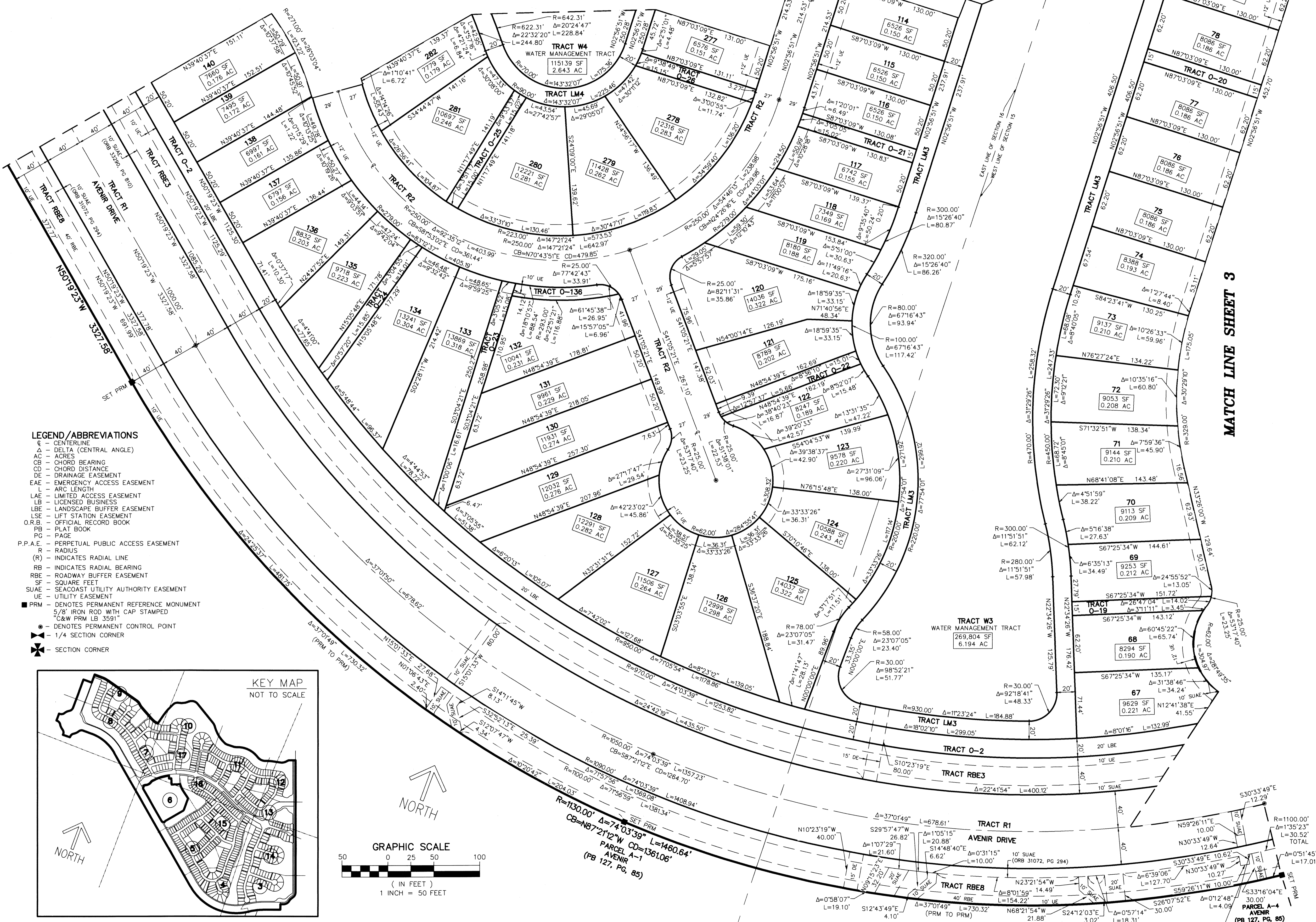
MATCH LINE SHEET 14

182

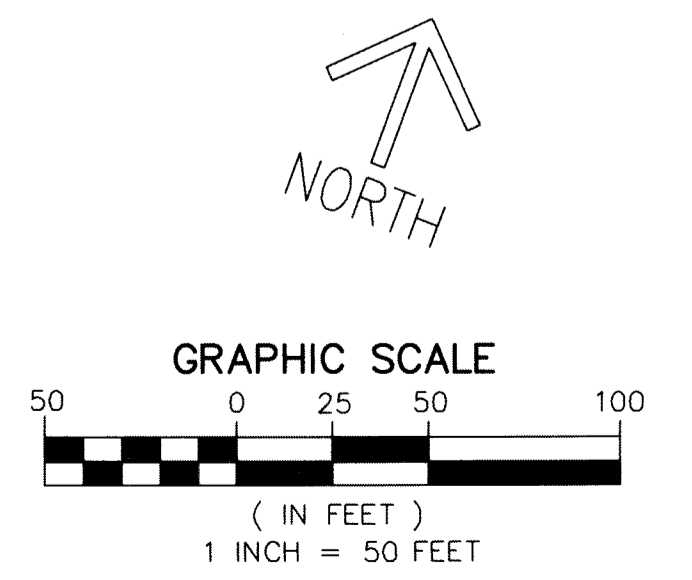
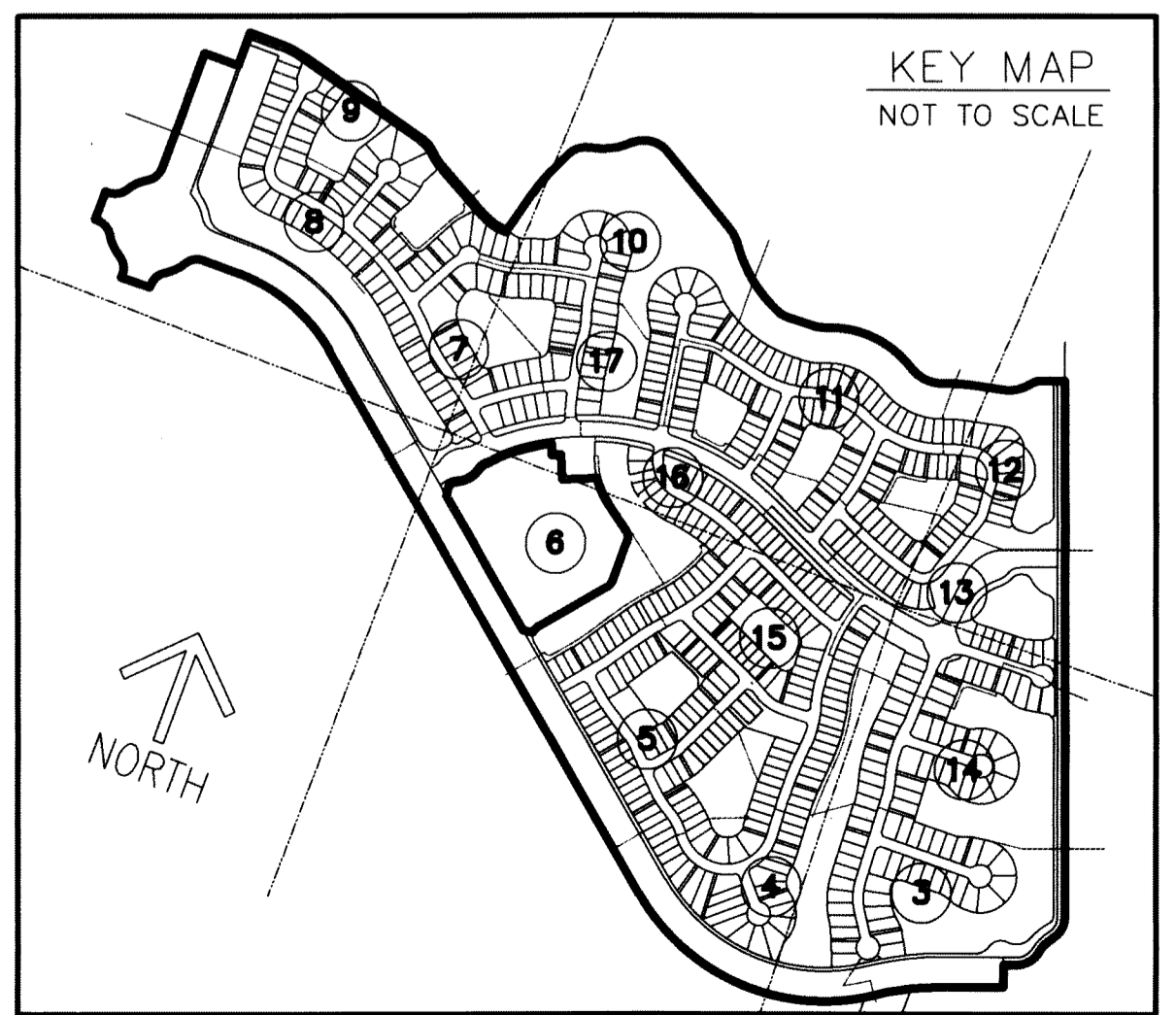
SHEET 4 OF 17

MATCH LINE SHEET 5

MATCH LINE SHEET 3



- LEGEND/ABBREVIATIONS**
- ⊕ - CENTERLINE
  - Δ - DELTA (CENTRAL ANGLE)
  - AC - ACRES
  - CB - CHORD BEARING
  - CD - CHORD DISTANCE
  - DE - DRAINAGE EASEMENT
  - EAE - EMERGENCY ACCESS EASEMENT
  - L - ARC LENGTH
  - LAE - LIMITED ACCESS EASEMENT
  - LB - LICENSED BUSINESS
  - LBE - LANDSCAPE BUFFER EASEMENT
  - LSE - LIFT STATION EASEMENT
  - O.R.B. - OFFICIAL RECORD BOOK
  - PB - PLAT BOOK
  - PG - PAGE
  - P.P.A.E. - PERPETUAL PUBLIC ACCESS EASEMENT
  - R - RADIUS
  - (R) - INDICATES RADIAL LINE
  - RB - INDICATES RADIAL BEARING
  - RBE - ROADWAY BUFFER EASEMENT
  - SF - SQUARE FEET
  - SUAE - SEACOAST UTILITY AUTHORITY EASEMENT
  - UE - UTILITY EASEMENT
  - PRM - DENOTES PERMANENT REFERENCE MONUMENT
  - 5/8" IRON ROD WITH CAP STAMPED "C&W PRM LB 3591"
  - - DENOTES PERMANENT CONTROL POINT
  - ⊕ - 1/4 SECTION CORNER
  - ⊕ - SECTION CORNER



SET PRM  
 CB=N87°21'12"W L=1460.64'  
 Δ=74°03'39" L=1460.64'  
 PARCEL A-1  
 AVENIR  
 (PB 127, PG. 85)